



# Myint & Associates Co., Ltd.

မြိုင်.အင် ( န် ) အ ဆိုစီ ရိုတ် ( စ် ) ကုမ္ပဏီ လီမိတက်

**PRESS RELEASE**

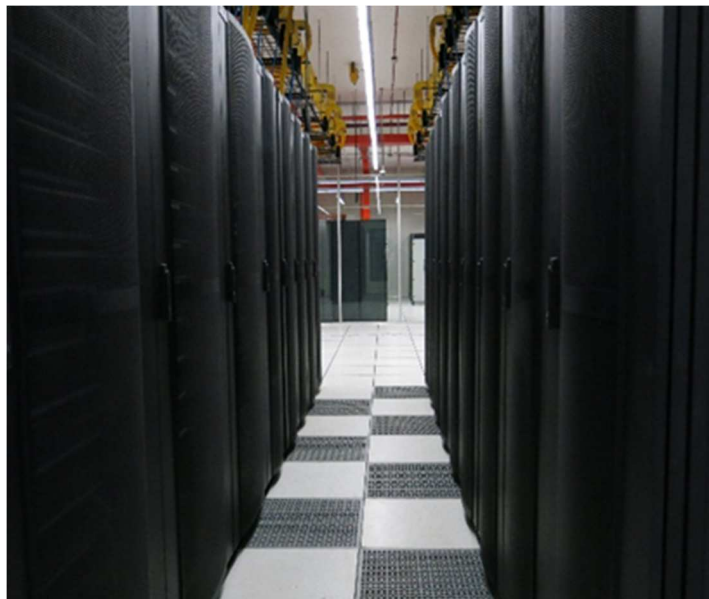
**FOR IMMEDIATE RELEASE**

## **MYANMAR'S FIRST DATA CENTRE RECEIVES UPTIME INSTITUTE TIER III CERTIFICATION**



**20 October 2015, YANGON** – VANTAGE TOWER, a property being developed by Myint & Associates Construction Company Ltd., will be completed in Q4 2015 and is set to be Myanmar's most technologically advanced building. The building boasts the highest levels of security, safety, fire prevention and evacuation systems available in the market as well as the country's first United States based Uptime Institute Tier III Certified Data Centre (M&A Data Centre), offering 90 racks of server co-location storage space and world-class support services. M&A Data Centre is located on the 6<sup>th</sup> floor of Tower B of the property.

“M&A Data Centre intends to host external clients as well as Vantage Tower tenants and is attracting a significant number of inquiries from telecommunication companies, financial institutions, government and co-location tenants”, says Hugo Slade, Managing Director of Slade Property Services, official property agent of Vantage Tower. “M&A Data Centre is the first and only data centre in Myanmar that has received the Uptime Institute's Tier III level certification and we are pleased to report that it has passed all due diligence investigations that have been performed by experienced international and local IT clients. We have already leased a good number of racks and we expect to lease all 90 racks very quickly.”



“M&A Data Centre intends to host external clients as well as Vantage Tower tenants and is attracting a significant number of inquiries from telecommunication companies, financial institutions, government and co-location tenants”, says Hugo Slade, Managing Director of Slade Property Services, official property agent of Vantage Tower. “M&A Data Centre is the first and only data centre in Myanmar that has received the Uptime Institute's Tier III level certification and we are pleased to report that it has passed all due diligence investigations that have been performed by experienced international and local IT clients. We have already leased a good number of racks and we expect to lease all 90 racks very quickly.”

M&A Data Centre has been designed to ensure 99.98% operational time on an annual basis with maximum downtime of no more than 1.6 hours per year. "In a market such as Myanmar, it is very challenging to develop and execute a data centre design which ensures constant reliable power and facilities which include multi-homing internet connectivity", said U Thein Soe Htaik, who is the Infra Team Leader and Head of the Data Centre team. "At Vantage Tower, we have installed 3 gen-sets, each of which are capable of providing 100% redundant back-up power. Three sources of UPS units utilizing Distributed Parallel Architecture, or DPA, eliminate downtime associated with the 30 second gen-set initialization period whereby back-up gen-sets also exist to ensure that M&A Data Centre and base building systems are continuously running," he added.

M&A Data Centre is carrier neutral and also offers 3 back-bone fibre optic lines within the building and guarantees download speed capabilities depending on the subscribed package. "I am extremely proud to be a part of a team to have achieved this IT milestone in Myanmar, and to have played a part of driving progress", said U Thein Soe Htaik.



Vantage Tower recently won 3 awards at the inaugural 2015 Myanmar Property Awards including "Best Office Development", "Best Office Architectural Design" and "Best Commercial Development, Myanmar".

**Vantage Tower**, a 236,144 sq ft (21,938 sqm) GFA mixed-use building, is located on the intersection of Inya Road and Pyay Road over-looking the western edge of Inya Lake, Yangon's most scenic area. The building will consist of two joined components;

**Tower A**, an 18 storey mixed-use tower with two basement levels that will provide approximately 100,000 sqft (9,290 sqm) of prime office accommodation, ground floor and 1<sup>st</sup> floor café and high-end restaurant facilities, and a spectacular penthouse on the 16<sup>th</sup> floor, and;

**Tower B**, an Uptime Institute Tier III Certified Data Centre, offering 90 racks of server co-location storage space and world-class support services, and a 6 level multi-storey car park that (along with 52 visitor car parking spaces in the 1<sup>st</sup> Basement Level) will hold 144 vehicles.

**For media enquiries, please contact:**

**Daw Kyisin Htin Aung**

**Monitoring, Evaluation & Knowledge Management Coordinator**

**MPRL E&P Pte Ltd.**

**Mobile: +95 9 794931009**

**[kyisin.h.aung@mprlexp.com](mailto:kyisin.h.aung@mprlexp.com)**